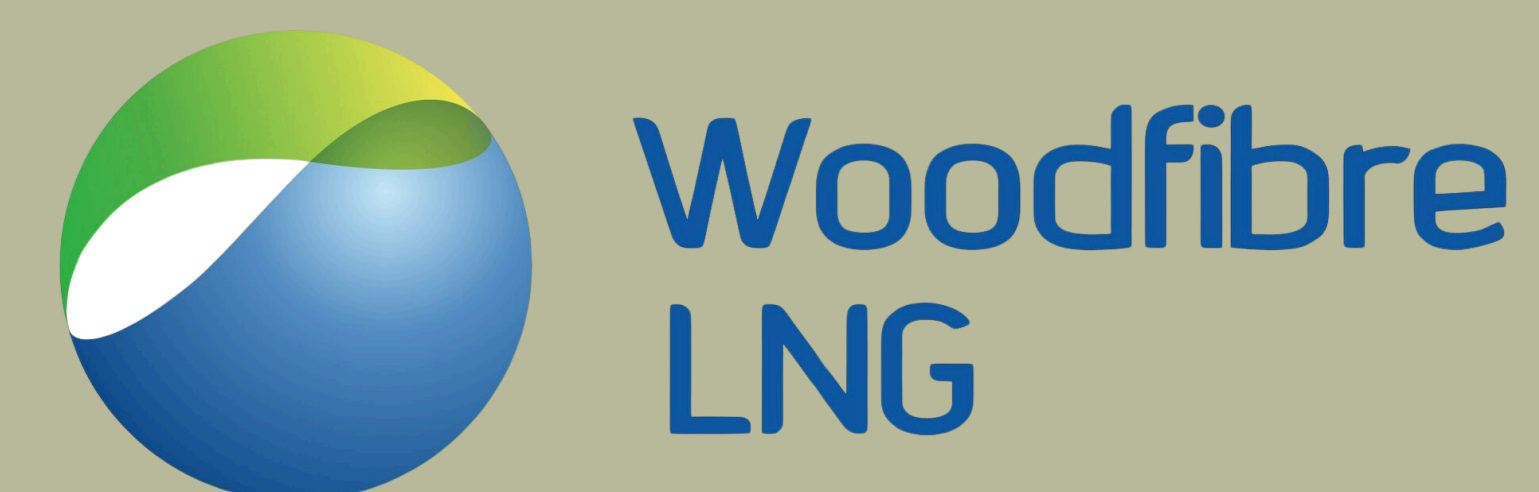




Welcome to the

Woodfibre LNG Interconnection Project Stage 2

Community
Open House



Welcome to the Community Open House

BC Hydro and Woodfibre LNG are sharing information on the Woodfibre LNG Interconnection Project Stage 2, an additional power line BC Hydro is building to ensure Woodfibre LNG has reliable access to clean and renewable power



How the Project Has Evolved

- In 2015, BC Hydro undertook early work and engagement, including open houses
- Options were explored based on the information at that time, and much has changed since 2015
- BC Hydro reassessed options and identified the current approach as the most suitable way to meet updated requirements
- We are now engaging with the community to share current information and receive feedback on the Project as it exists today.

Woodfibre LNG

- Woodfibre LNG is committed to building one of the lowest emission liquefied natural gas (LNG) projects in the world
- This is creating local jobs, getting more Canadian energy to global markets and setting a new standard for responsibly produced liquified natural gas
- By using clean and renewable instead of gas to power liquefaction, Woodfibre LNG can produce LNG with 9 times less greenhouse gases (GHGs) versus a conventional LNG facility

Why Woodfibre LNG Needs New Infrastructure

Woodfibre LNG will use BC Hydro renewable electricity to power the process that makes LNG, instead of using natural gas

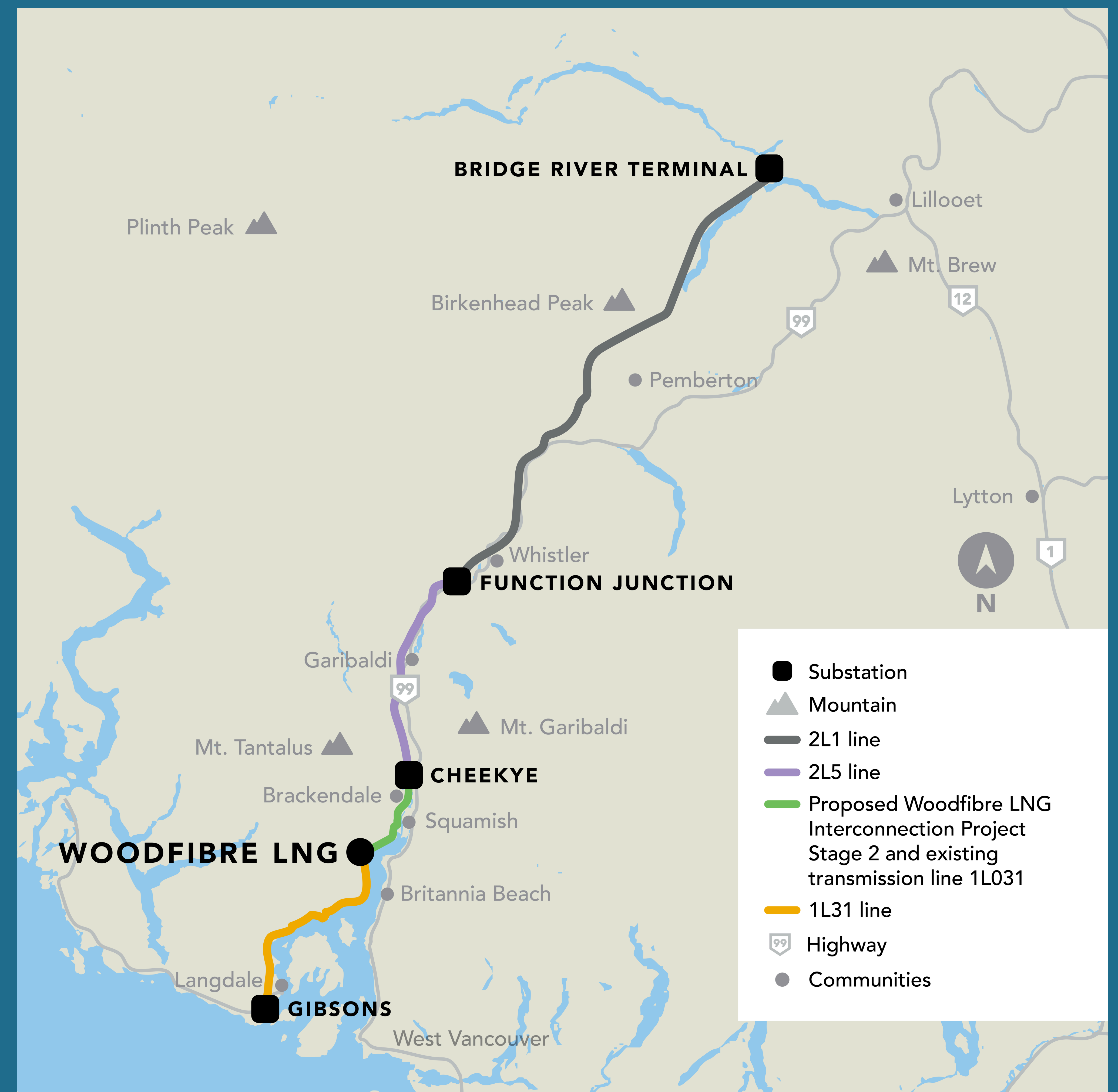
This dramatically reduces the emissions intensity of Woodfibre LNG – roughly 90 per cent lower than conventional LNG export facilities

The production of liquefied natural gas (LNG) requires power to be available 100 per cent of the time, with no possibility of interruptions which would undermine the liquefaction process. Even short stoppages can cause significant operational disruptions

Delivering Power to Woodfibre LNG

BC Hydro will be designing and building an interconnection for its customer Woodfibre LNG, ensuring reliable access to clean and renewable power

This additional power line will be built within the current right of way, running from Cheekye Substation through Brackendale to the LNG facility



The Route

The Woodfibre LNG Interconnection Project Stage 2 is an additional power line that will be built within the current right of way, running from Cheekye Substation through Brackendale to the LNG facility

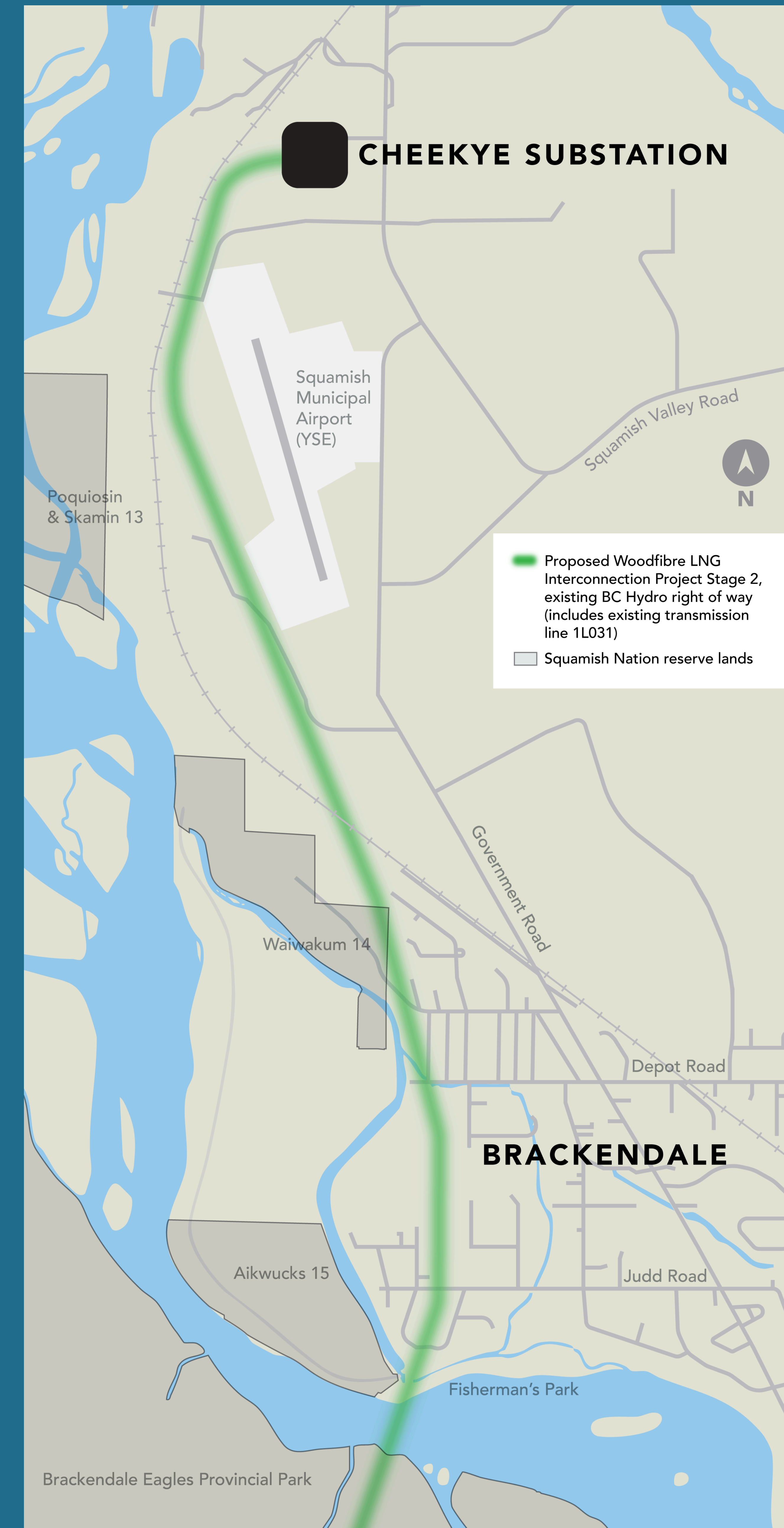
The existing 138-kV line is active and supports the regional grid. An additional line is required for long-term reliability

It will be a 19-km, 138-kilovolt overhead power line delivering 126 megawatts of power



Using Existing Corridors to Reduce Impacts

- We know that our work has impacts
- Building this additional power line will require construction activities in an existing right of way in the community, including near residents' homes and in their backyards as well as Fisherman's Park in the Brackendale area
- Minimizes new impacts to the area
- Using the 500-kV corridor would require significant new infrastructure and introduce additional technical and reliability risks



What is a Right of Way?

A designated corridor where BC Hydro is permitted to build, operate and maintain transmission infrastructure

Rights of way are secured in advance so they can be used for future upgrades or additional lines as electricity needs grow

BC Hydro Properties team will be meeting individually with those residents who are directly impacted by this transmission line

Did You Know? Most of the rights of way in this area were acquired by BC Hydro as early as 1957

Why This Project Approach



By supplying clean power to BC Hydro's industrial customers, this Project supports British Columbia's economic growth and climate action goals, helping to limit greenhouse gas (GHG) emissions



Building this line for Woodfibre LNG will ensure the LNG facility is powered by clean and renewable electricity from BC Hydro's grid



Meets Woodfibre LNG's schedule requirements

Commitment to Stewardship

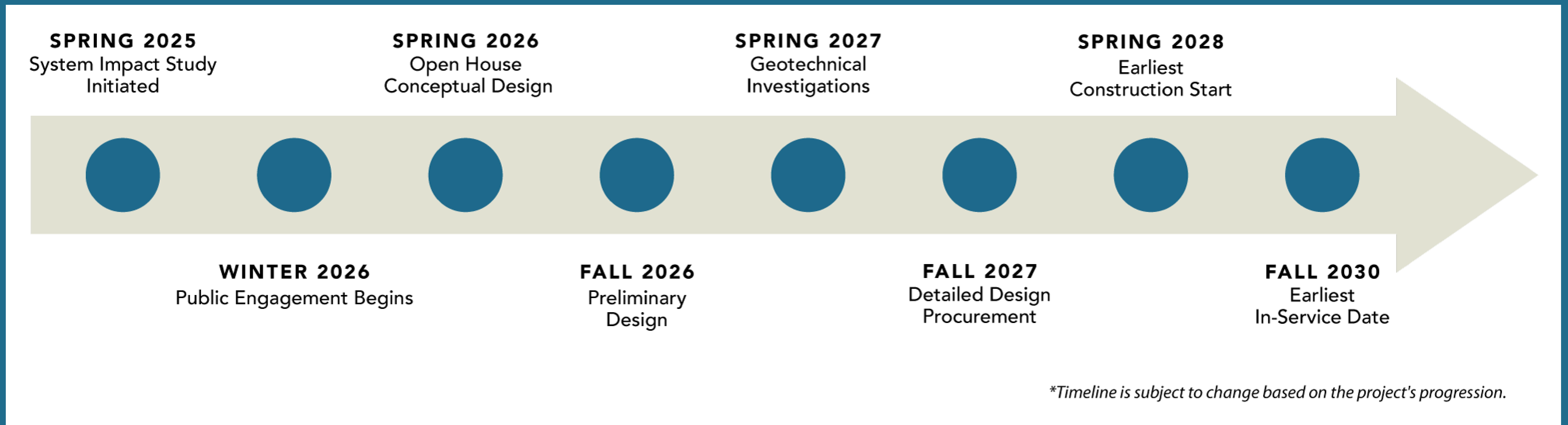


This approach avoids creating a new transmission line route and minimizes environmental impacts

Studies will be completed to assess where impacts can be avoided and mitigation measures will be developed to minimize impacts on the local environment

This interconnection will follow BC Hydro's strict environmental and safety standards every step of the way

Timeline and Next Steps



Next Step: Spring 2026 – Conceptual Design

Engagement and Feedback

- Both Woodfibre LNG and BC Hydro are committed to open and transparent communications

- Includes meaningful consultation with First Nations and engaging with local government, the public and anyone affected by construction including those we anticipate being impacted by construction along the right of way

- We will be keeping you informed as planning progress through:
 - Meetings with stakeholders
 - Ongoing Open Houses
 - Updates on the Project website

Thank You

How to Share Feedback

Email:

Info@WLNGLinterconnectionStage2.com

Complete the feedback form in-person or online

Website

wlnginterconnectionstage2.com



Scan here for the digital feedback form